



Model ST48R5

Truck Mounted 48-Meter Concrete Boom Pump



- **Economy Line**
- **156'6" (47.7 m) Vertical Reach**
- **160 yd³/hr (125 m³/hr)**
- **1233 psi Concrete Pressure**
- **5-Section Roll and Fold Boom with 5" (125 mm) Line**
- **Centralized "S" Outrigger and Boom Pedestal**
- **Efficient Rexroth A4VG125 "Closed-Loop" Hydraulics**
- **Radiused Boom Design**

Boom: Versatile, compact, fully articulating 5-section roll-and-fold boom represents the latest in boom technology. Radiused boom design to improve durability and eliminate stress focal points. Low unfolding height of 29'10" (9.1 m).

Delivery Line: 5" (125 mm) delivery line bracket mounted for easy delivery line replacement.

Pedestal: Integrated outrigger and boom pedestal with small outrigger footprint. "X"-structure design eliminates stress or twist in truck frame. Hydraulic oil tank and water tank located in pedestal section for improved weight distribution. Two spacious 12' 9" (3.9 m) long decks for convenient storage of pipes and hoses.

Outriggers: Front and rear, fully hydraulic, "S"-type outriggers; only 32'1" (9.78 m) front width and 32'4" (9.86 m) rear width for quick setup. Outrigger controls are located at the truck boom base. Unsurpassed stability while pumping.

Remote Controls: Convenient teather to overcome rare RF obstacles. Fully proportional radio remote controls included. Manual boom controls are conveniently located on the RH side.

Clean-Out: Hydraulically driven, high pressure 580 psi (40 bar) water pump with a 185 gal (700 L) water tank and hose.

Concrete Pump - Closed-loop hydraulic system using Rexroth A4VG125 hydraulic pump for smooth, controllable pumping. Hard-chromed concrete cylinders and carbide wear parts precision machined for long life and tight sealing. Fully-variable volume control from 0 to 160 yd³/hr (0 to 125 m³/hr). Hinged clean-out door and swing away discharge pipe for quick, effective wash-out. All major system components located for good operator accessibility and ease of service. Harsh-mix hopper combines field proven boom pump experience with the most advanced technology available. Hopper grate and splash guards are standard.

Model ST48R5

Truck Mounted 48-Meter Concrete Boom Pump

BOOM SPECIFICATIONS

BOOM SPECIFICATIONS		ST48R5
Height & Reach		
Vertical Reach	156'6"	47.70 m
Horizontal Reach	143'8"	43.80 m
Reach Depth	113'2"	34.30 m
Unfolding Height	30'6"	9.30 m
4-Section Boom		
1st Section Articulation	91°	91°
2nd Section Articulation	180°	180°
3rd Section Articulation	180°	180°
4th Section Articulation	180°	180°
5th Section Articulation	270°	270°
1st Section Length	31'8"	9.65 m
2nd Section Length	28'3"	8.60 m
3rd Section Length	28'3"	8.60 m
4th Section Length	27'9"	8.45 m
5th Section Length	27'7"	8.40 m
General Specs		
Pipeline Size (ID) Metric Ends	5.0"	125 mm
Rotation	365°	365°
End Hose: Length (Heavy-duty)	10'0"	3.00 m
Diameter	5.0"	125 mm
Outrigger Spread L-R-Front	32'1"	9.78 m
Outrigger Spread L-R-Rear	32'4"	9.86 m

PUMP SPECIFICATIONS

Output:	160 yd ³ /hr	125 m ³ /hr
Pressure:	1233 psi	85 bar
Hard-Chromed Concrete Cylinders	Standard	
Concrete Cylinder Diameter	9.0"	230 mm
Stroke Length	79.0"	2000 mm
Maximum Strokes per Minute:	25	
Hopper Capacity	21.2 ft ³	600 L
Volume Control	Zero to Full	
Hopper Grate Vibrator	Standard	
Hydraulic System:	Closed-loop	
Hydraulic System Pressure	4640 psi	320 bar
Hydraulic Tanks Capacity (Pump & Boom)	238 gal	900 L
Hydraulic Drive Cylinders: Rod Diameter	3.15"	80mm
Piston Diameter	4.9"	125mm
Water Tank Capacity	148 gal	560 L
Maximum Aggregate Size	2.5"	63 mm

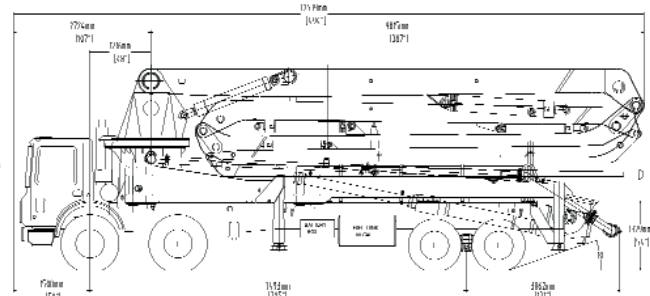
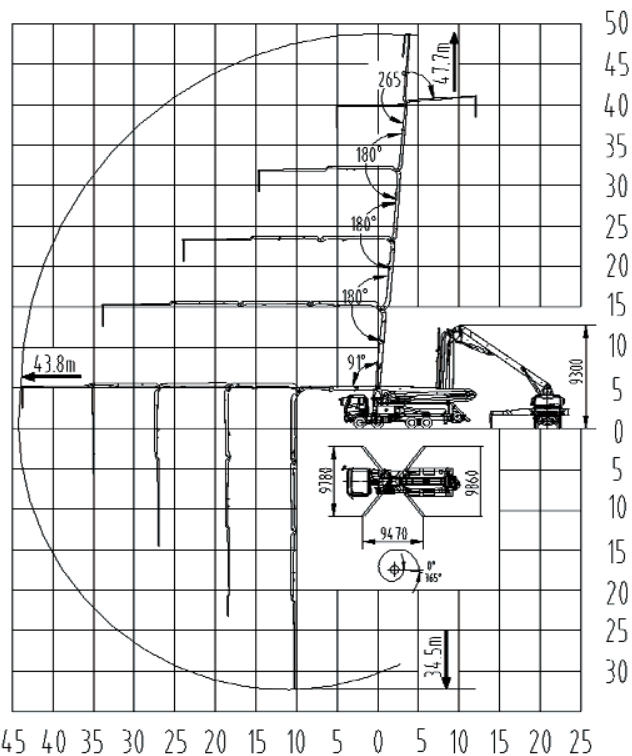
TRUCK MOUNTED SPECIFICATIONS*

Truck Model:	Mack MR 688S	
Horsepower	460	460
Length	41'2"	12.55 m
Width	8'2"	2.49 m
Height	13'2"	4.01 m
Wheelbase	295"	7.99 m
Front Axle Weight (Approx.)**	40,000 lbs	18,144 kg
Rear Axle Weight (Approx.)**	44,000 lbs	19,958 kg
Total Weight (Approx.)**	84,000 lbs	38,102 kg

Maximum theoretical performance shown above. Maximum output and pressure cannot be reached simultaneously. Performance will vary depending on slump, mix design and pipeline diameter. Specifications subject to change without prior notice.

*Dimensions vary with different truck makes, models and specifications.

**Weights are approximate



Distributed By:

REED • An Independent Member of the Shea Family of Companies
 13822 Oaks Avenue • Chino, California 91710-7008 USA • 909-287-2100
 Fax: 909-287-2140 • Toll-free: 888-779-7333 • www.reedpumps.com